

A large offshore wind farm with many white wind turbines on a blue sea under a clear blue sky. The turbines are arranged in a long line, receding into the distance.

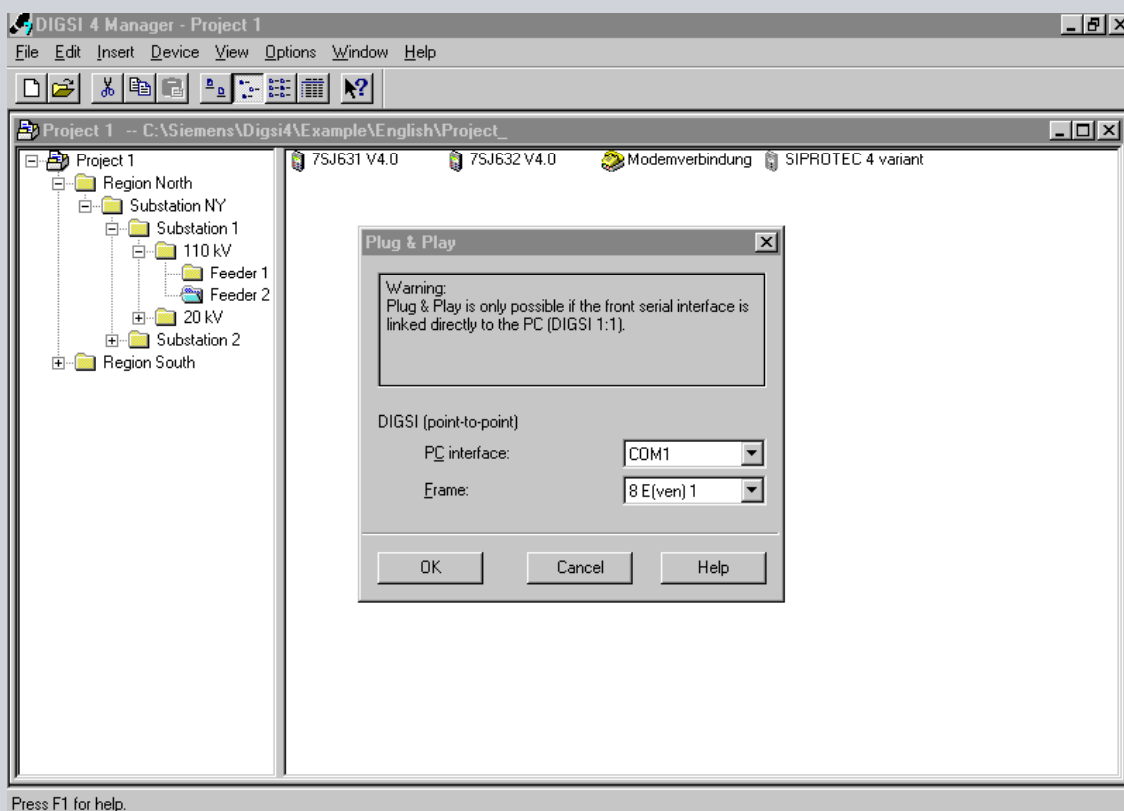
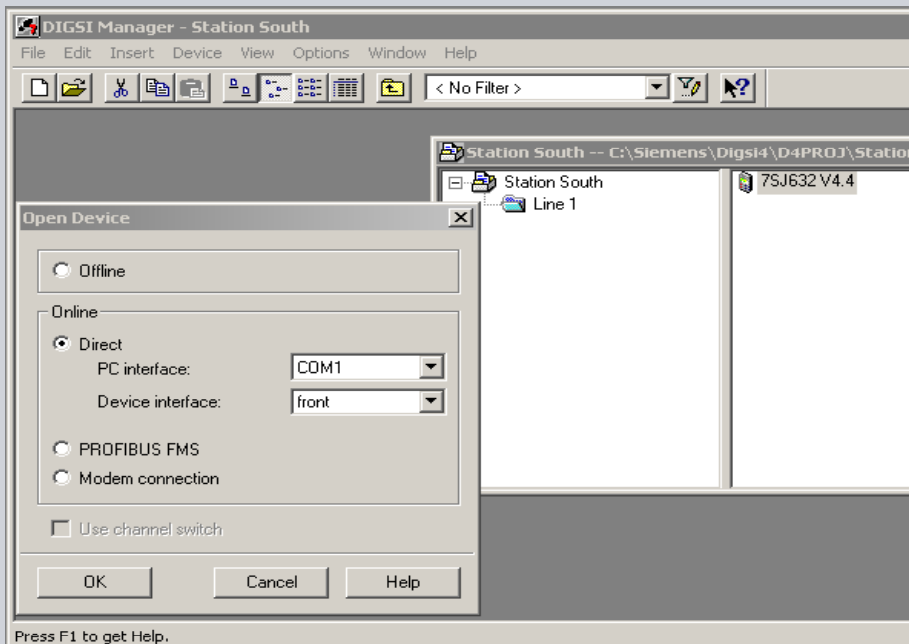
# Commissioning & Test Functions

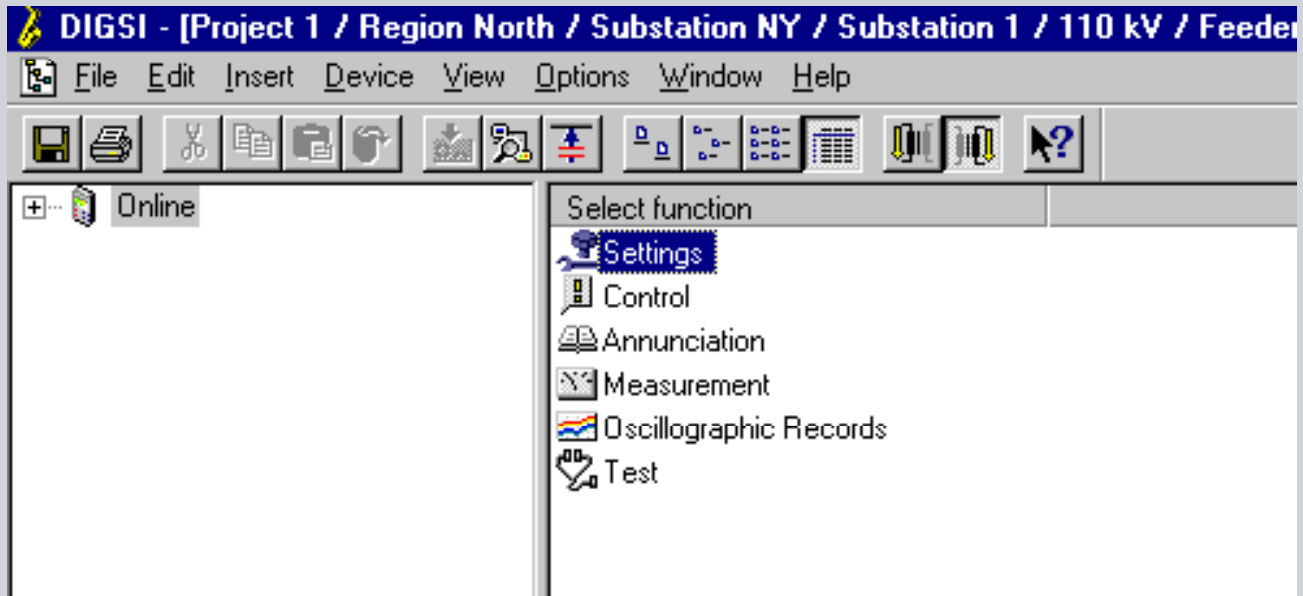
© Siemens AG 2008  
Energy Sector

## DIGSI 4 - Online Mode

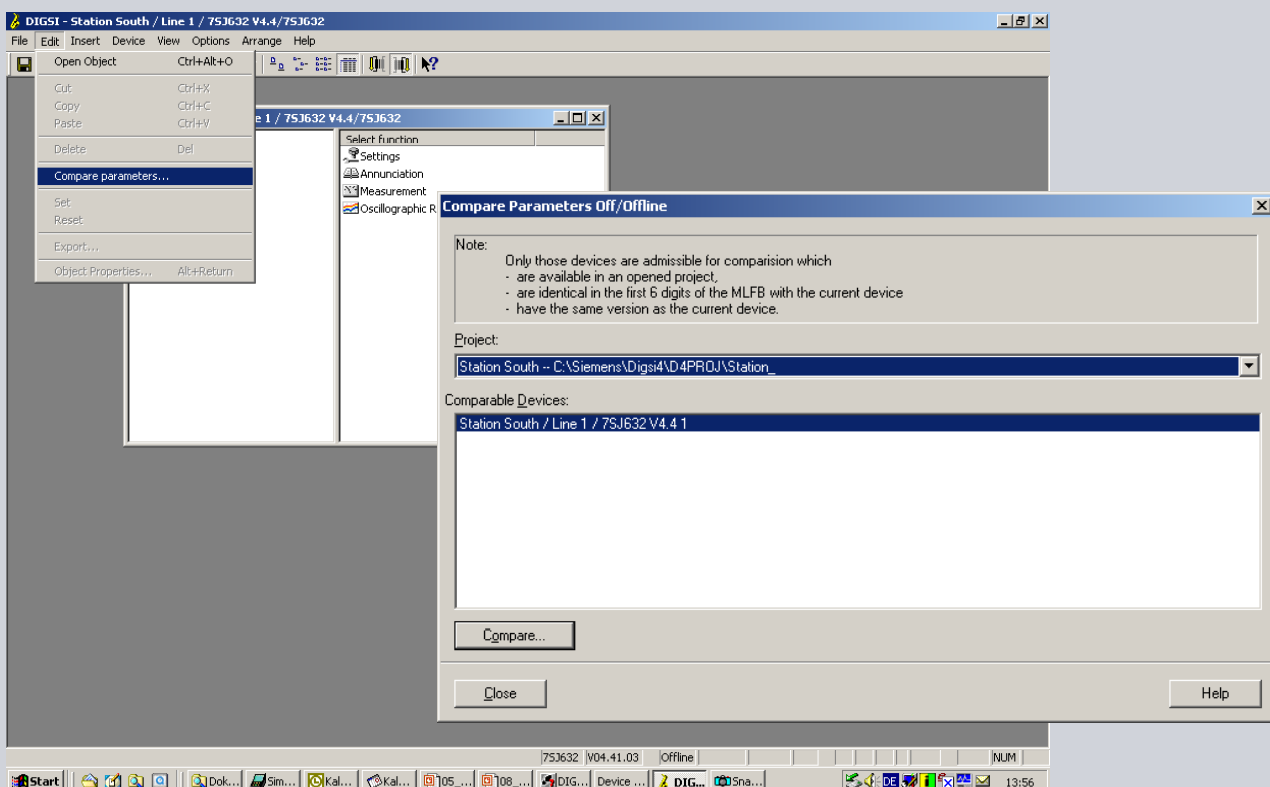
- Open Device in Online Mode
- Plug & Play (First the device has to be initialized)
- Parameter Comparison
- Hardware Test
- Log Files

- Open Device in Online Mode



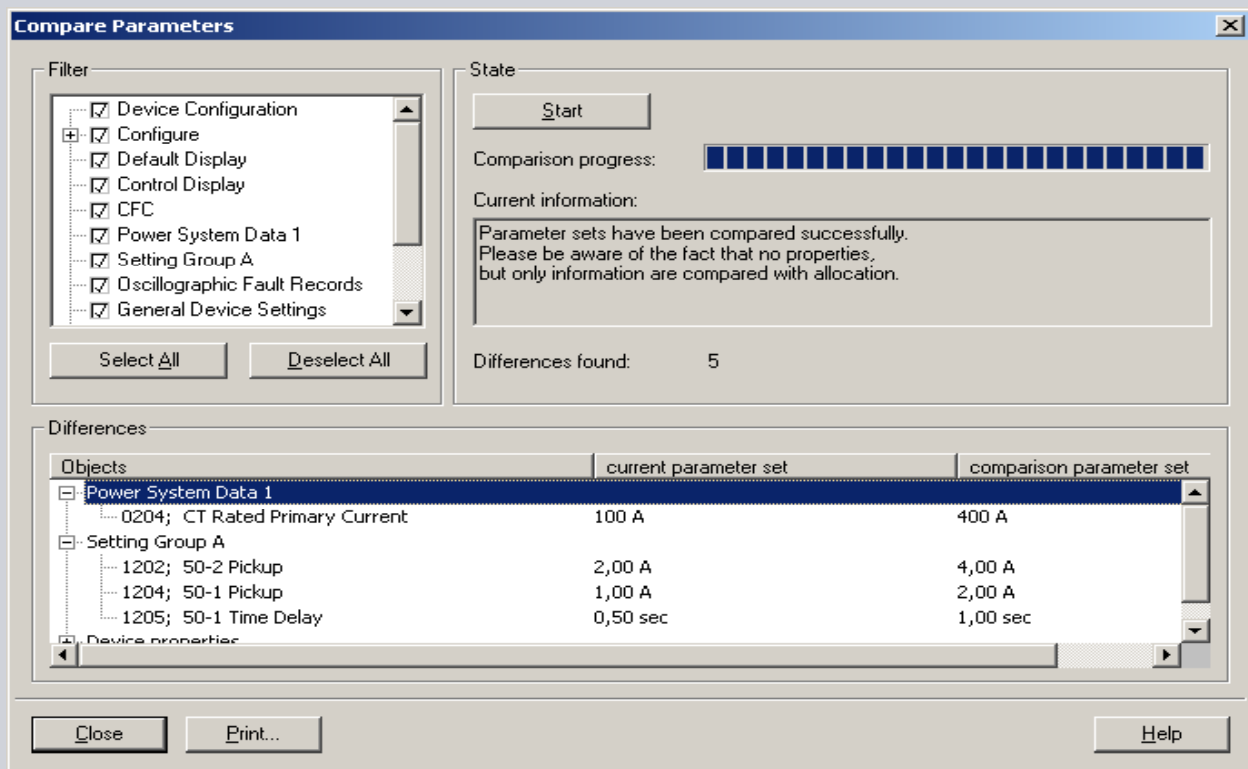


# DIGSI 4 - Parameter Comparison Offline-/Offline and Online-/Offline



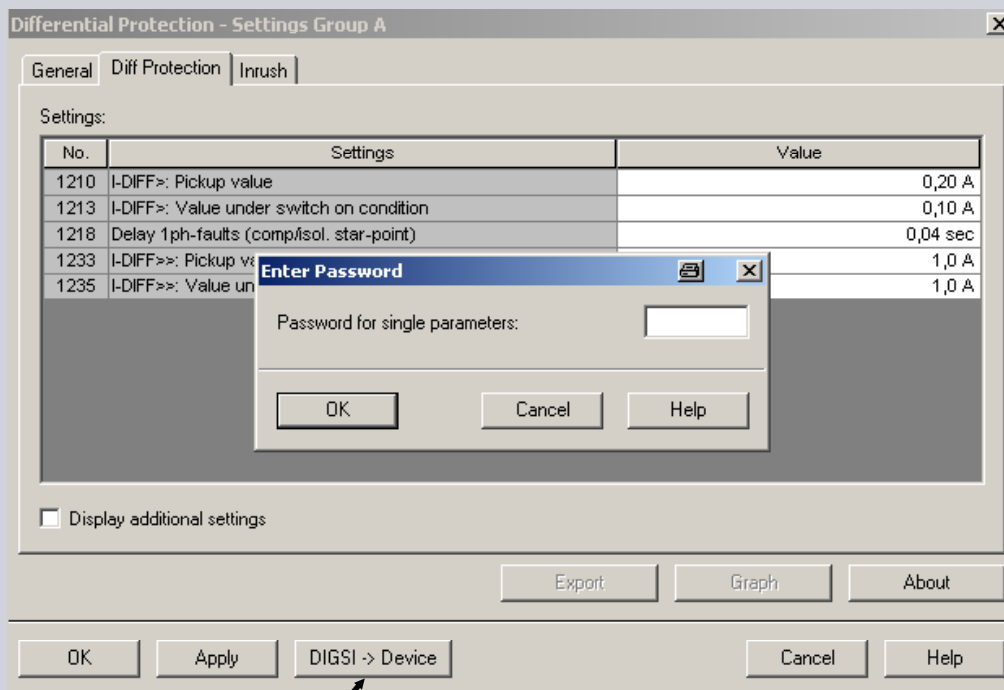
# DIGSI 4 - Parameter Comparison

## Offline-/Offline and Online-/Offline

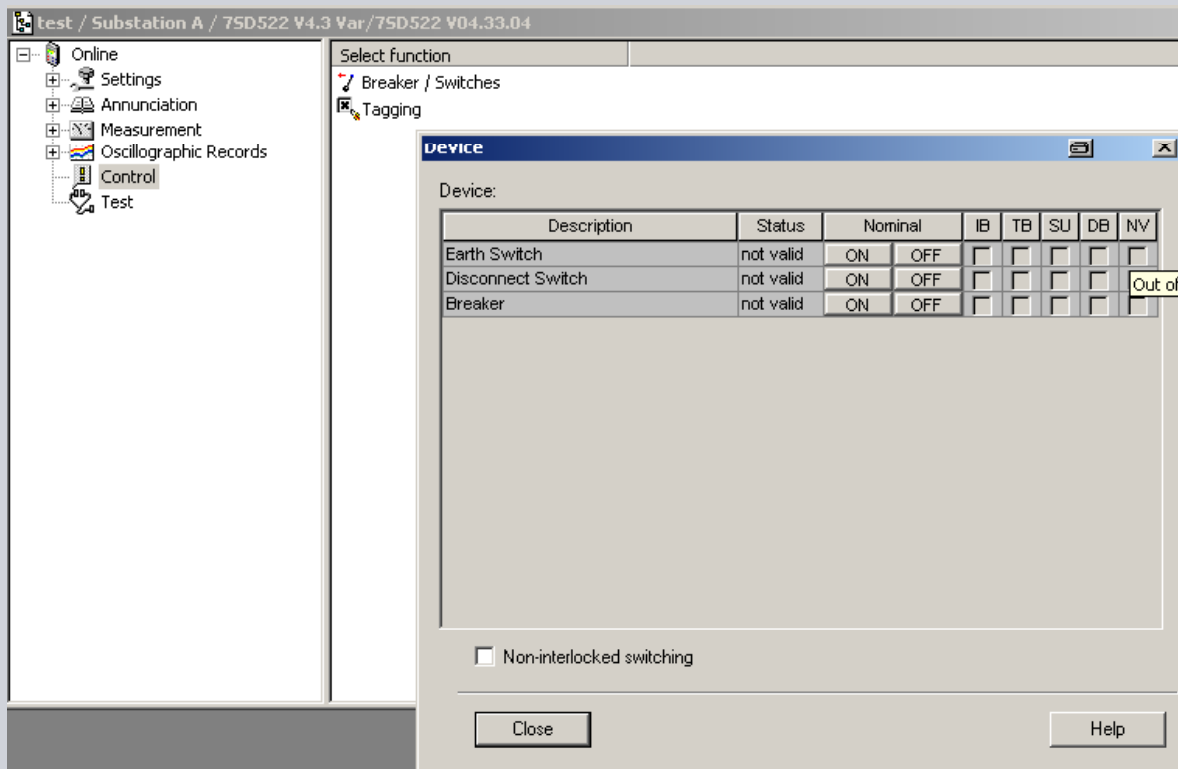


# Change / Transmission of single parameters

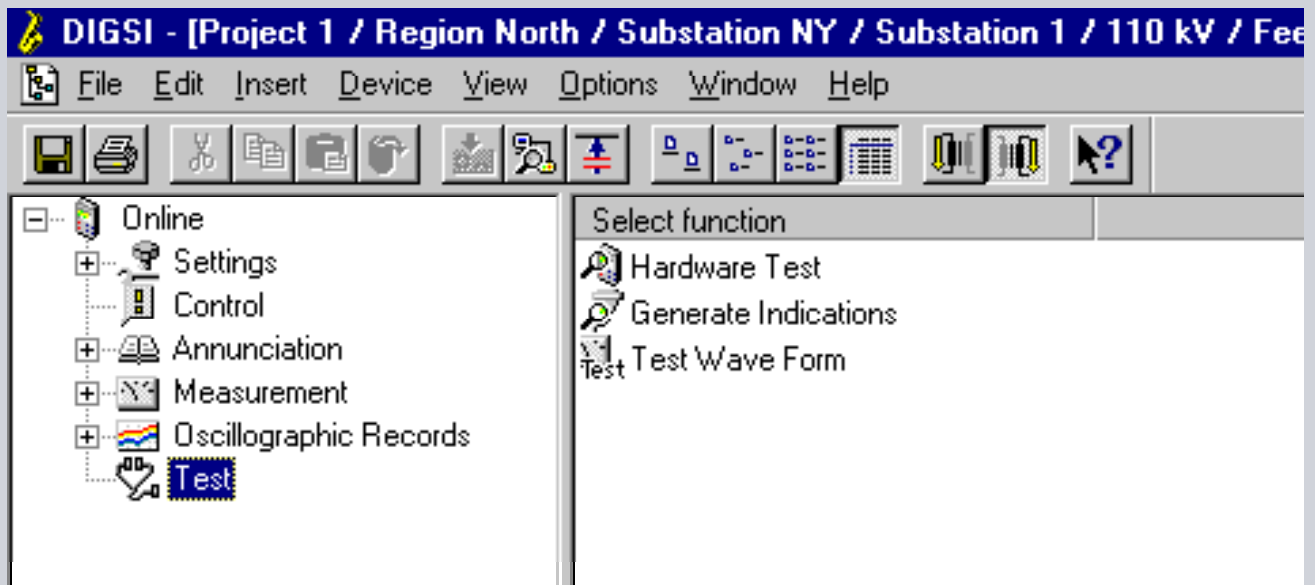
## in online mode

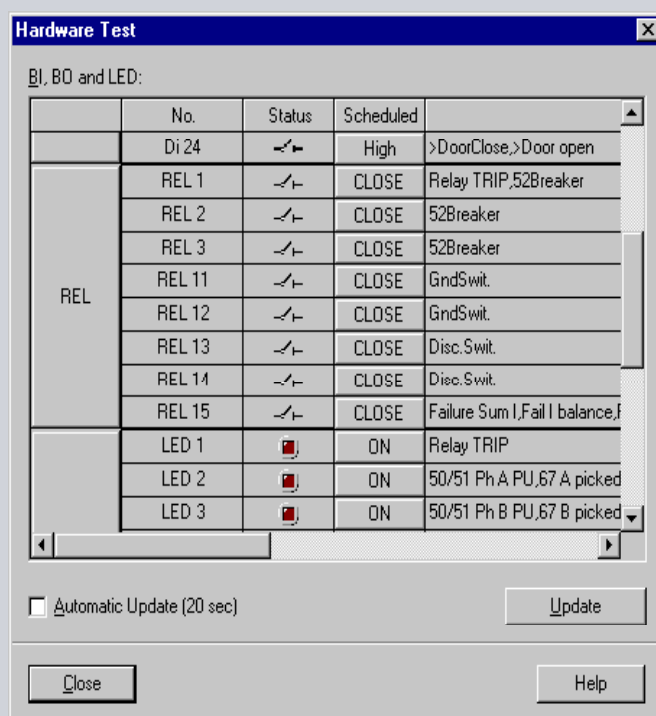
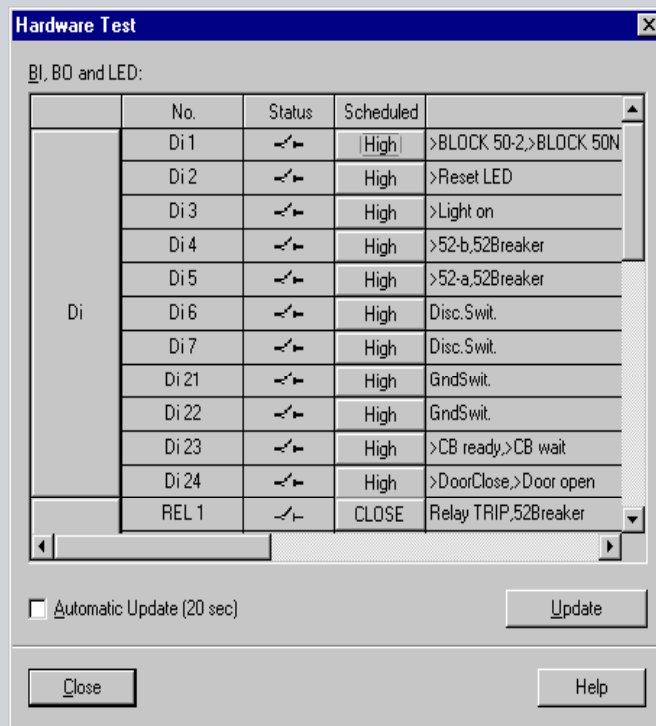


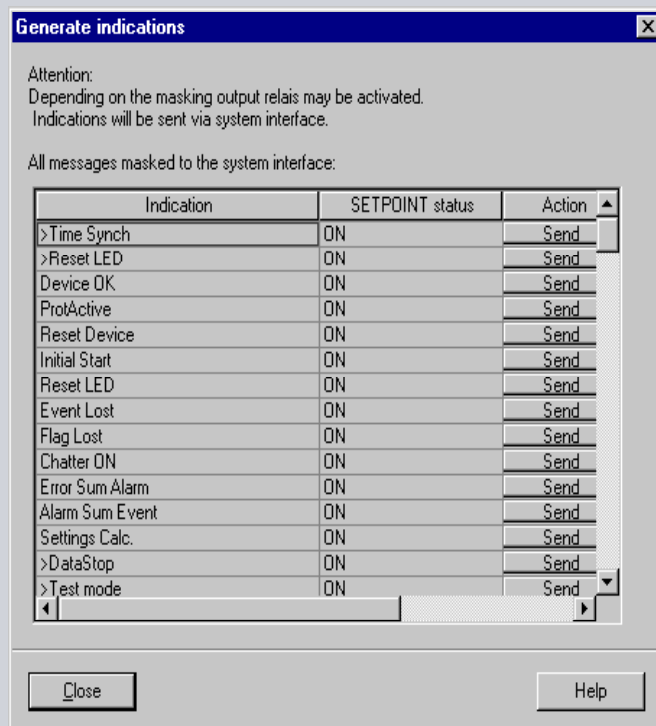
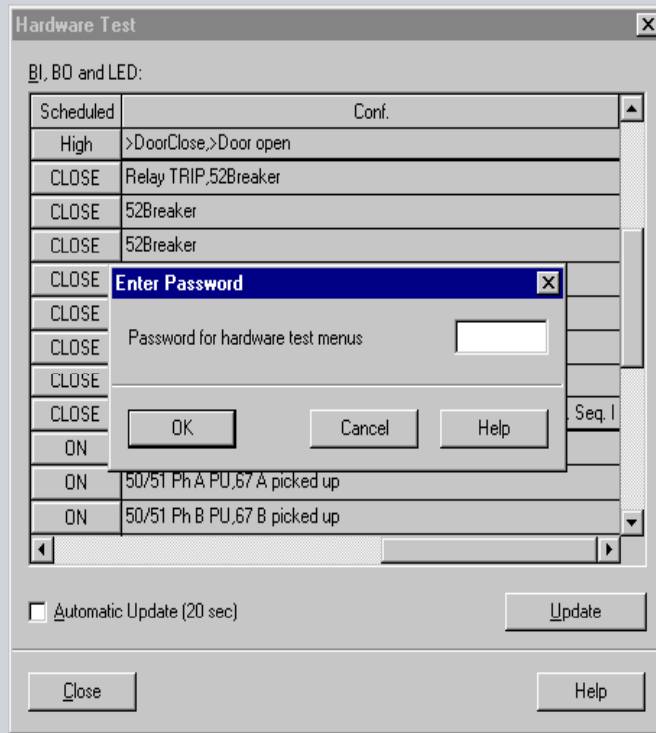
# DIGSI 4 - Control of switching devices



# DIGSI 4 - Hardware Test







Test mode

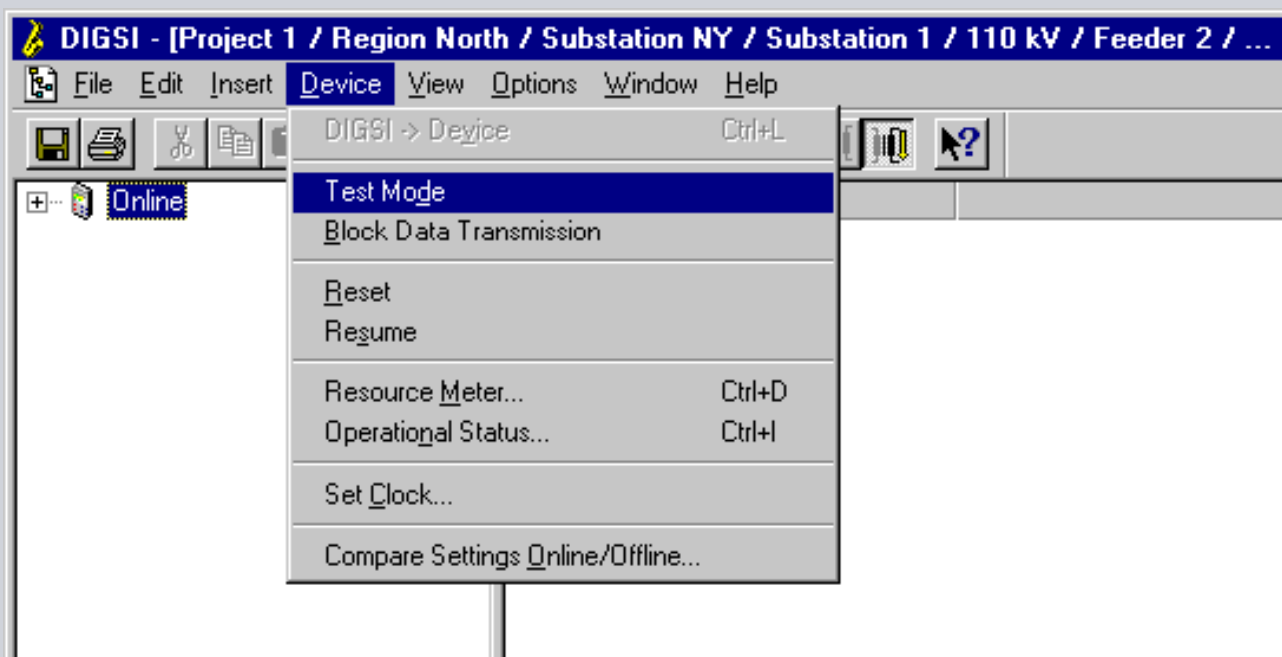
Data Transmission blocking

Process data retrieval

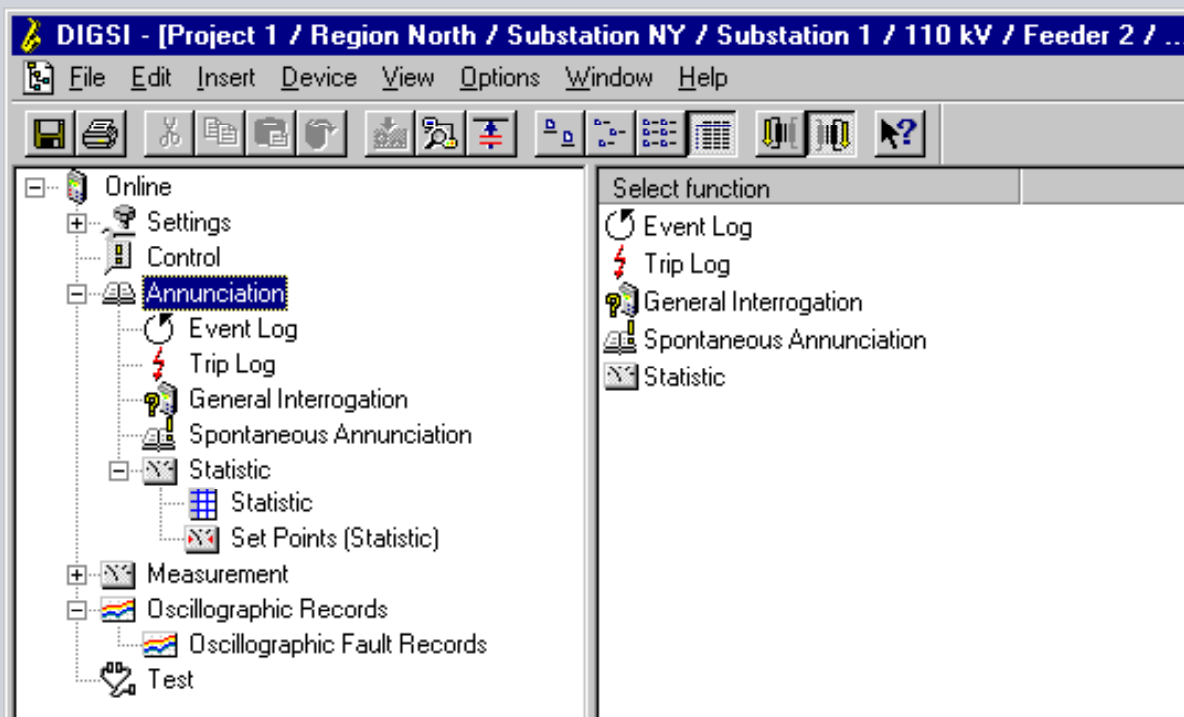
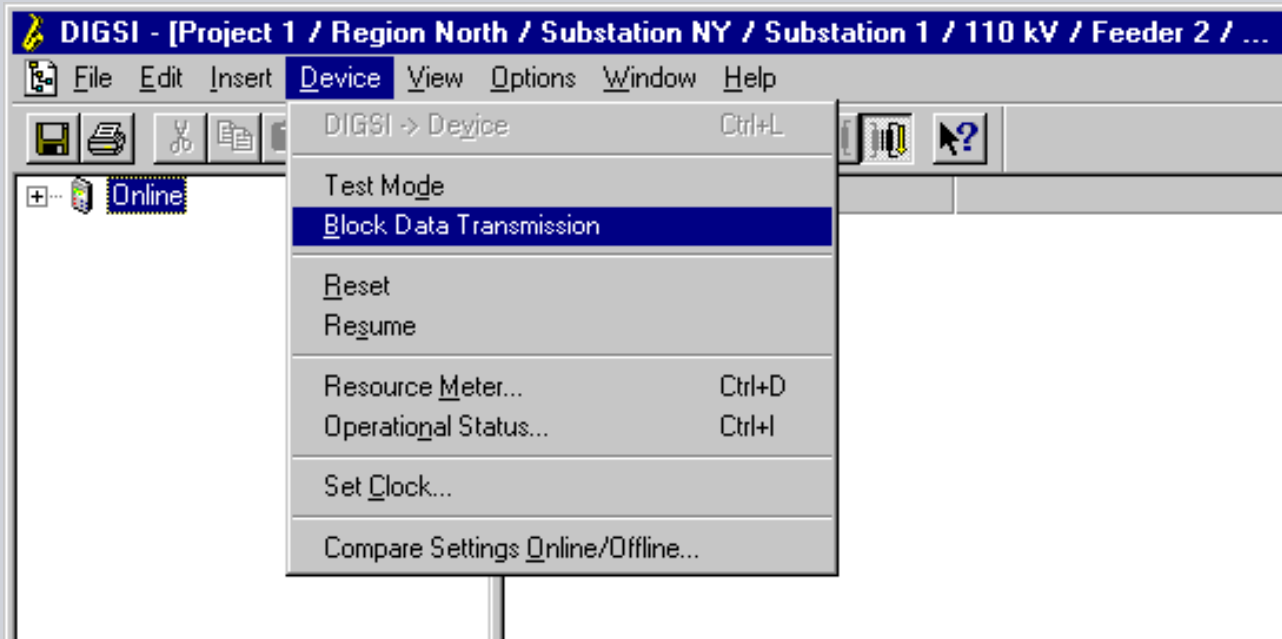
Operational indication

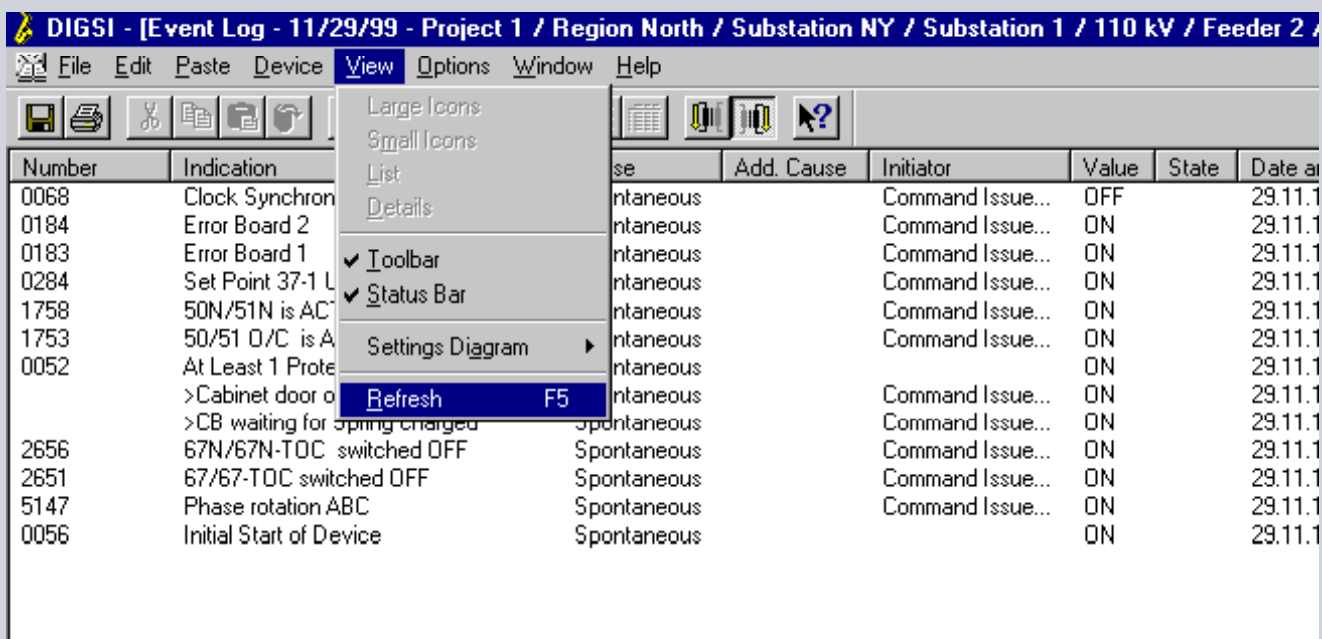
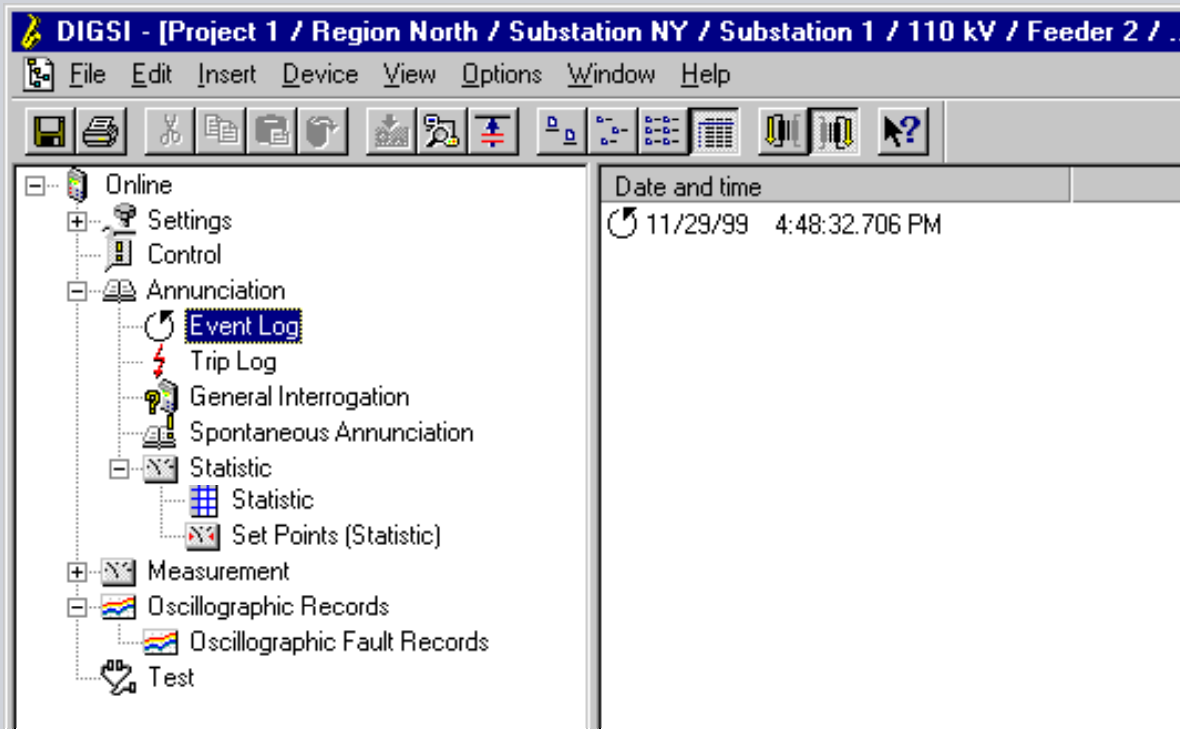
Operational measuring values

## DIGSI 4 - Test Mode

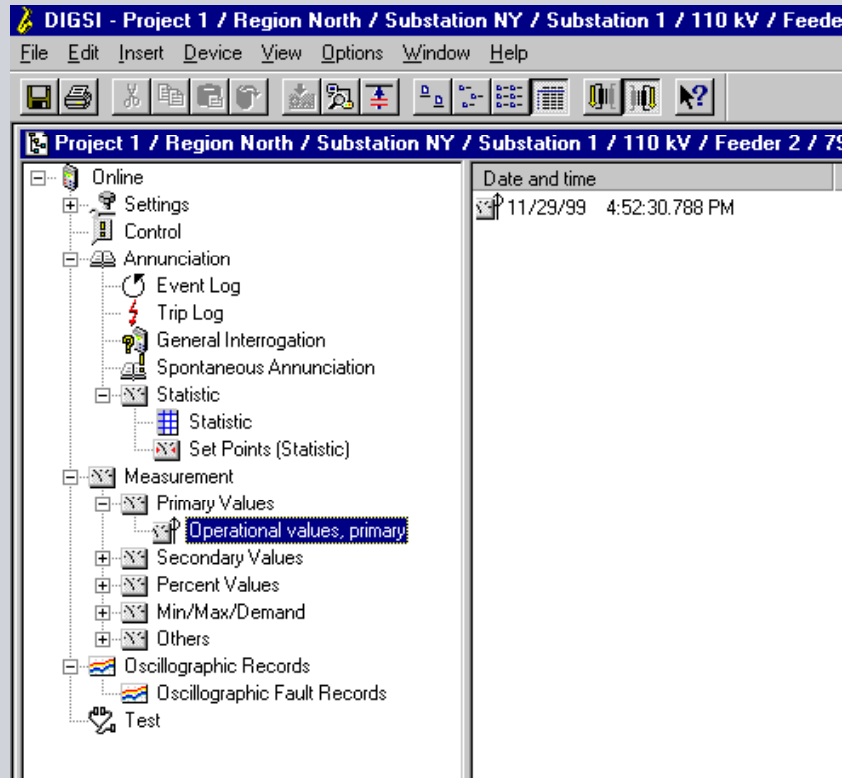






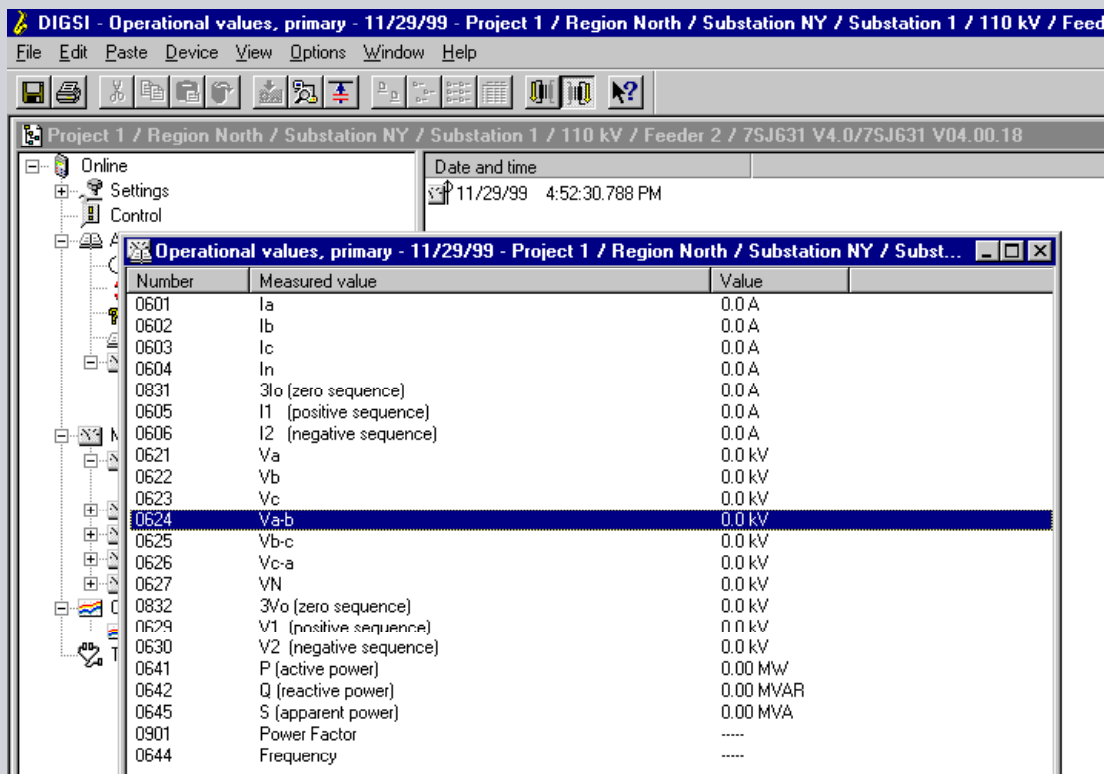


# DIGSI 4 - Measurement of Operational Values



Energy Automation

# DIGSI 4 - Measurement of Operational Values



Energy Automation

