

# Device Parameterization

© Siemens AG 2008  
Energy Sector

## DIGSI 4 – Device Parameterization & Configuration **SIEMENS**

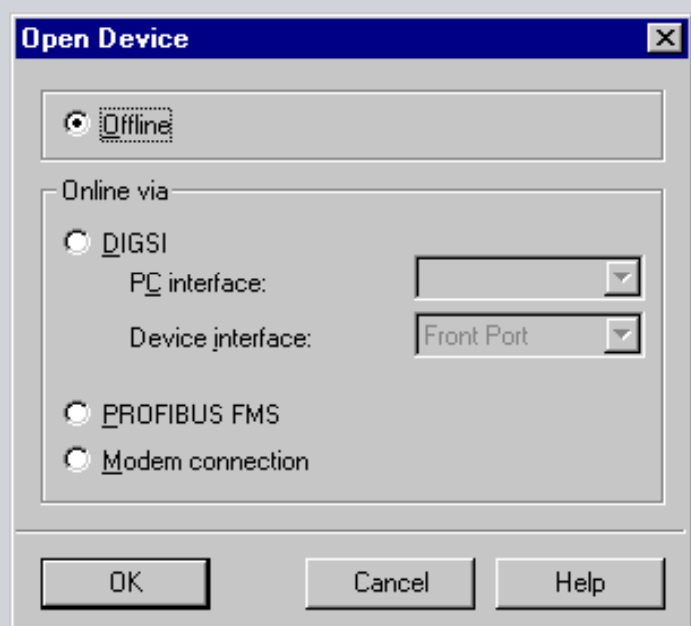
- Overview
- Device parameterization and configuration in the Offline mode
- Configuration of information
- CFC logical functions
- DIGSI 4 Editor for default and control display
- Settings transfer to device
- Settings change in the Offline mode
- Save settings change in the Offline mode
- Exercises

Possible storage locations for a device setting block:

- Data structure of the DIGSI 4 settings computer
- Memory of the SIPROTEC 4 device
- External storage medium (for ex. memory stick)

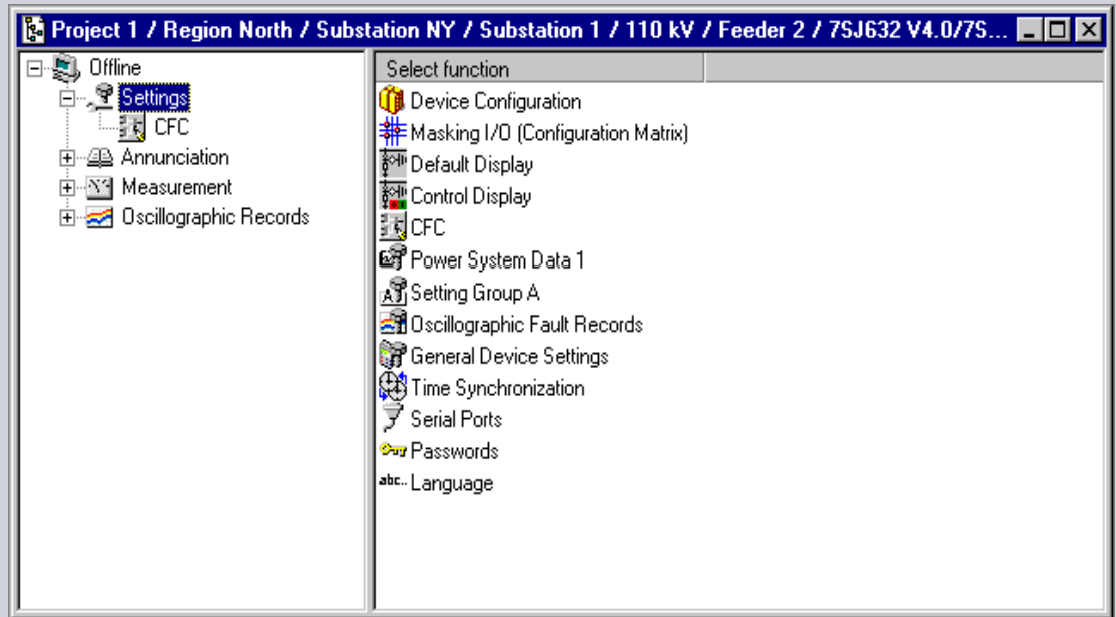
## DIGSI 4 – Device in the Offline Mode

Working with SIPROTEC 4 data in the Offline mode



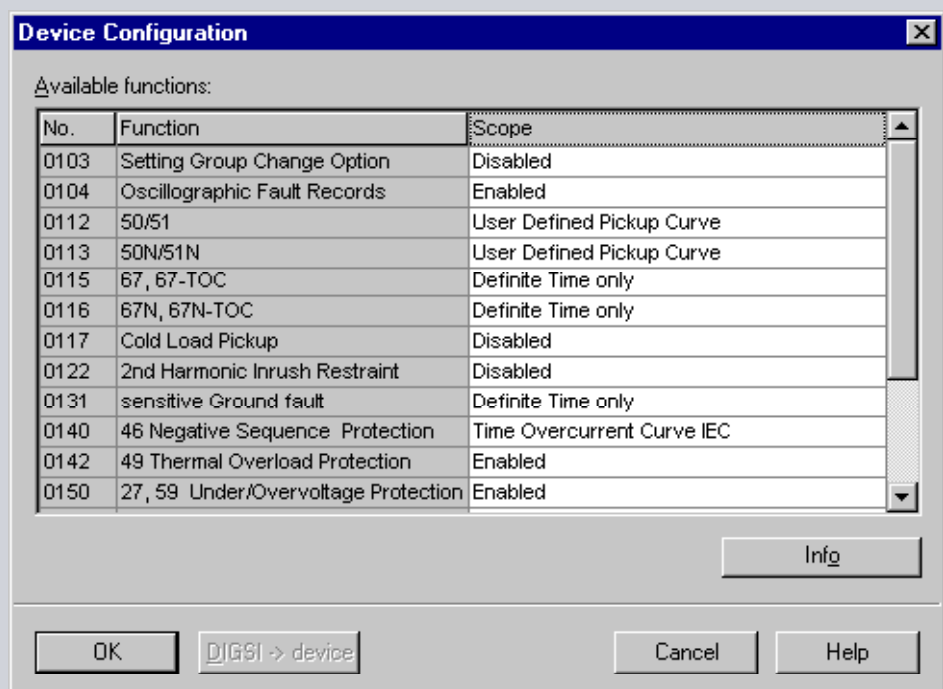
# DIGSI 4 – Device Settings

- Open device
- Open tree view
- Select Settings



# DIGSI 4 – Device Configuration

- Selecting the device configuration



# DIGSI 4 – Setting Groups

Editing

Display activated group

Switching

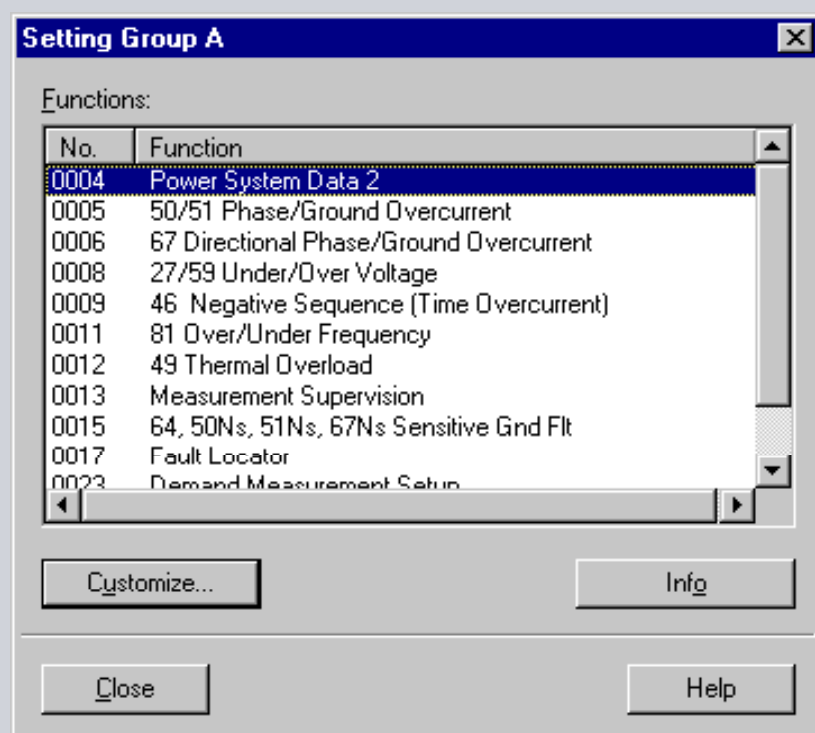
Copy

Reset

Export protection settings

# DIGSI 4 – Setting Group Definition

Define Setting Group

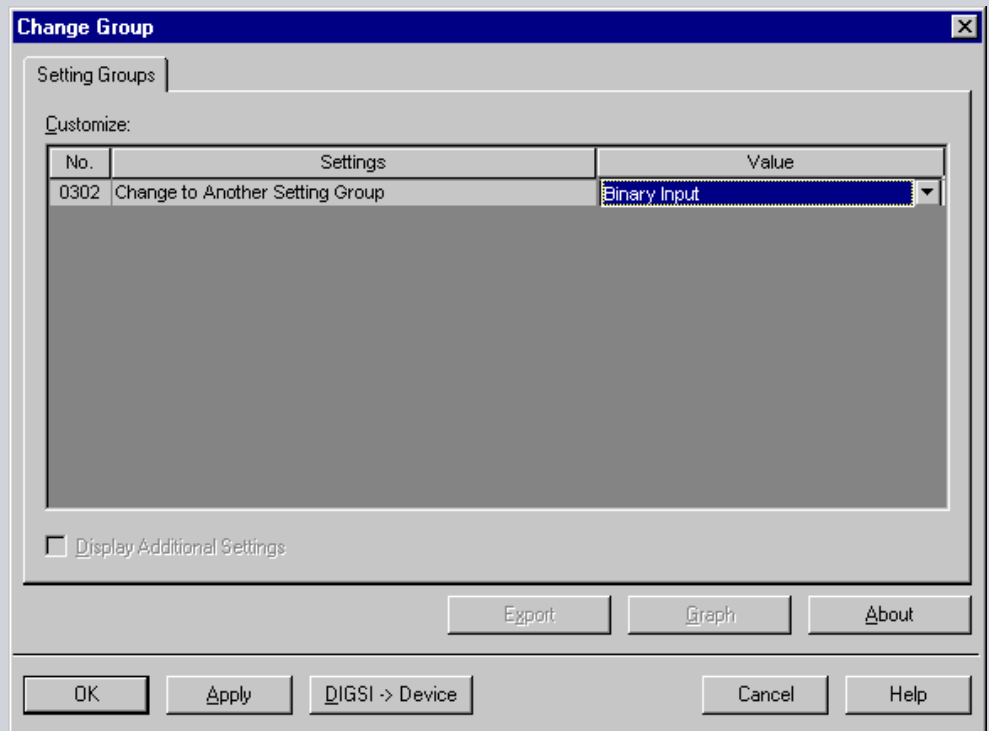


# DIGSI 4 – Changing Setting Group

Direct selection in the DIGSI 4 Dialog

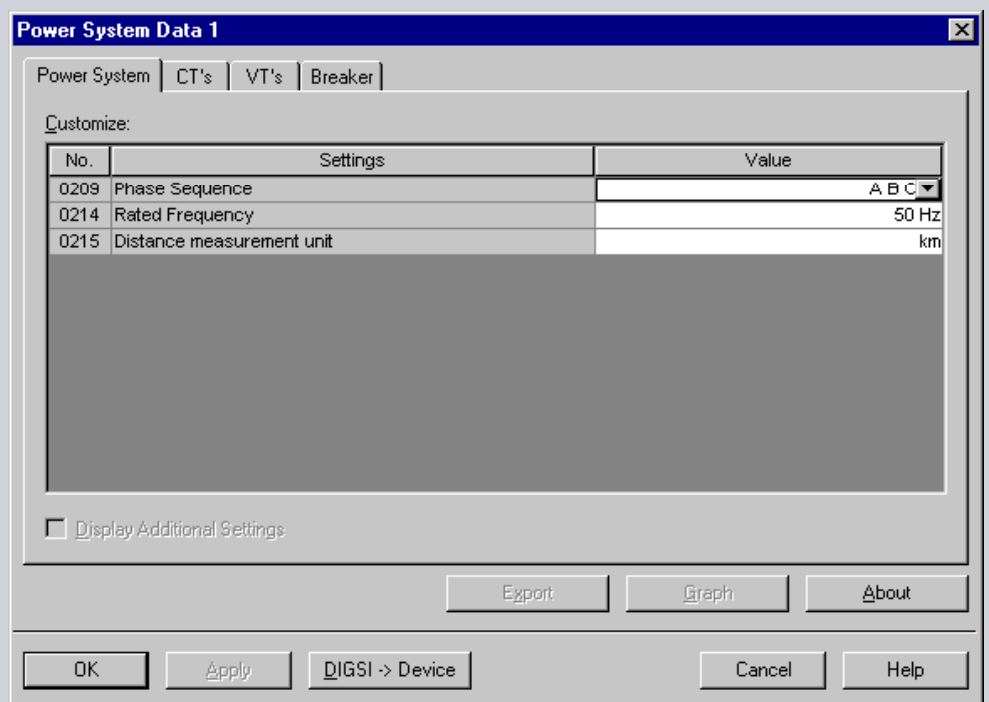
Binary input

Telegram (IEC60870-5-103)



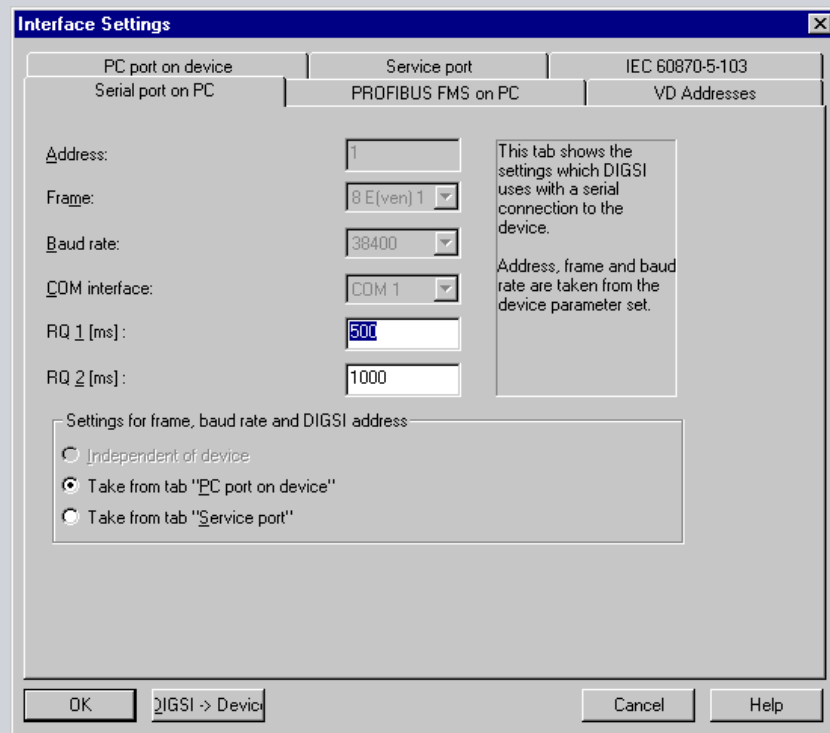
# DIGSI 4 – Editing System Data

Higher-level device data definition



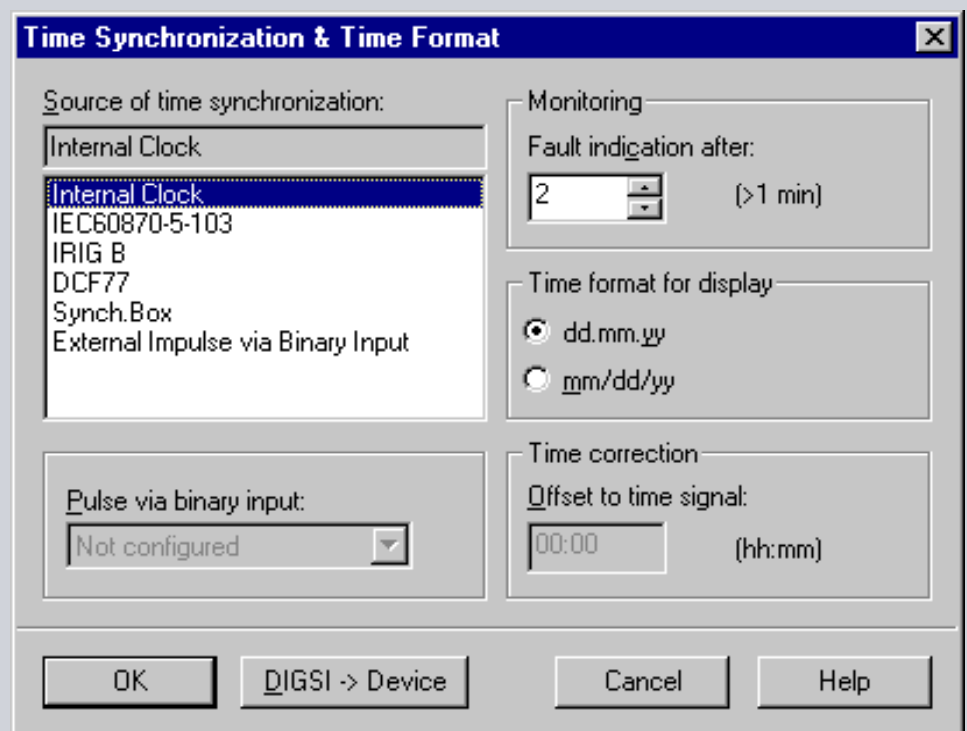
# DIGSI 4 – Defining Interfaces

Definition of the PC Interface Settings



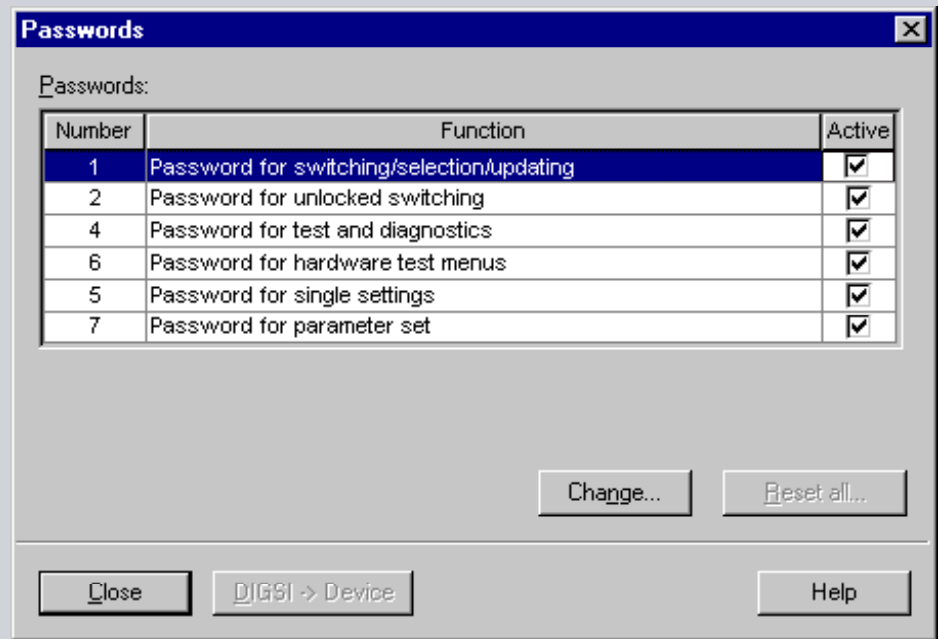
# DIGSI 4 – Time Synchronization

Setting of the device time synchronization



# DIGSI 4 – Password Protection

Password assignment



# DIGSI 4 – Password Protection

Password

Definition Change







## Structure of the matrix:

- Information
- Source
- Destination

## Information blocks

- general
- protection functions
- indications, measured values, statistics
- functional scope related
- user-defined

# DIGSI 4 – Object Properties

Single Point  
Indication SP

**Object properties - >52-a - SP**

Transmission via IEC 60870-5-103

Function type:

Information no.:

DU type:

Filter

Filter time [ms]:

Retrigger filter

Select indication

Select indication in oszillographic fault record

Chatter blocking...

Activate

OK Cancel Help

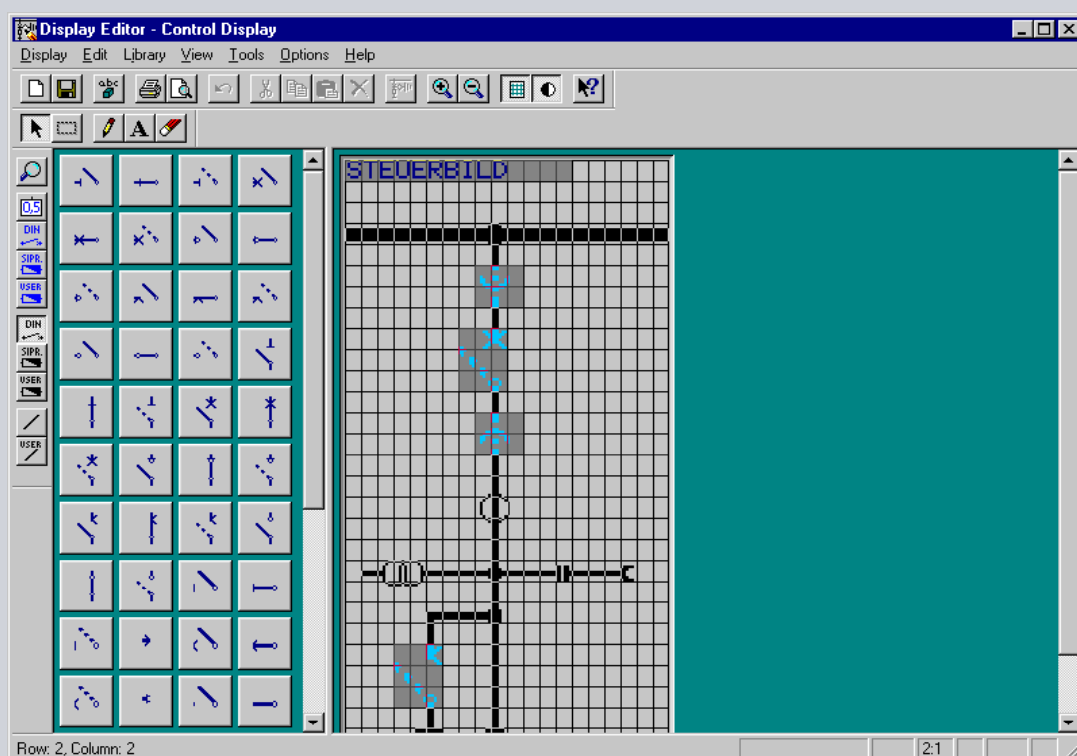
## Default display

- Not operator-controllable
- Indication of operational status, measured values, texts

## Control display

- Release of switching operations
- Indication of operational status, measured values, texts

# DIGSI 4 – Default and Control Display



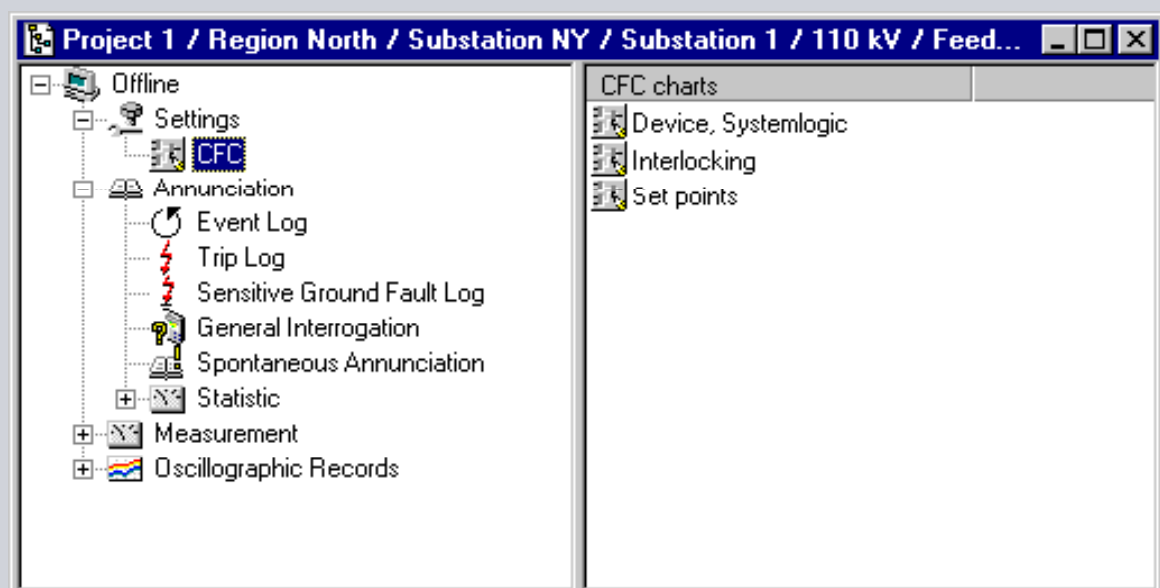
## CFC blocks to link information

- creating group indications
- defining interlocking checks

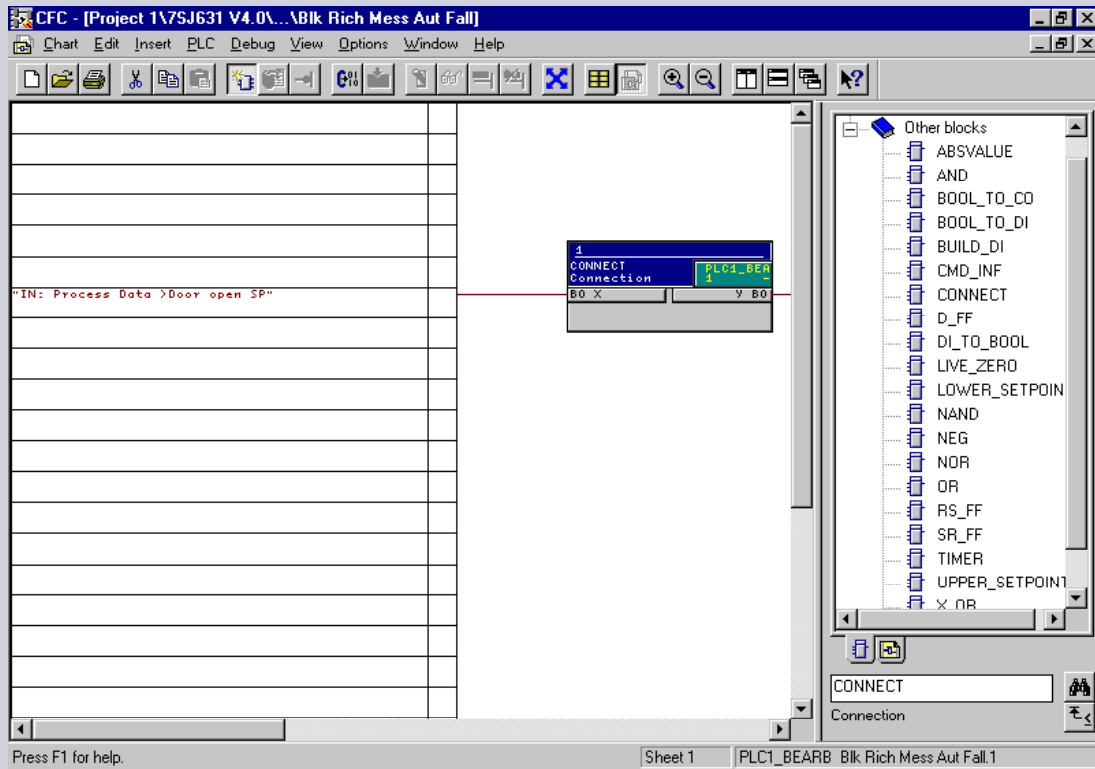
## Configuration steps

- starting CFC
- inserting chart
- inserting module
- defining order of execution
- interconnecting blocks

## Start CFC



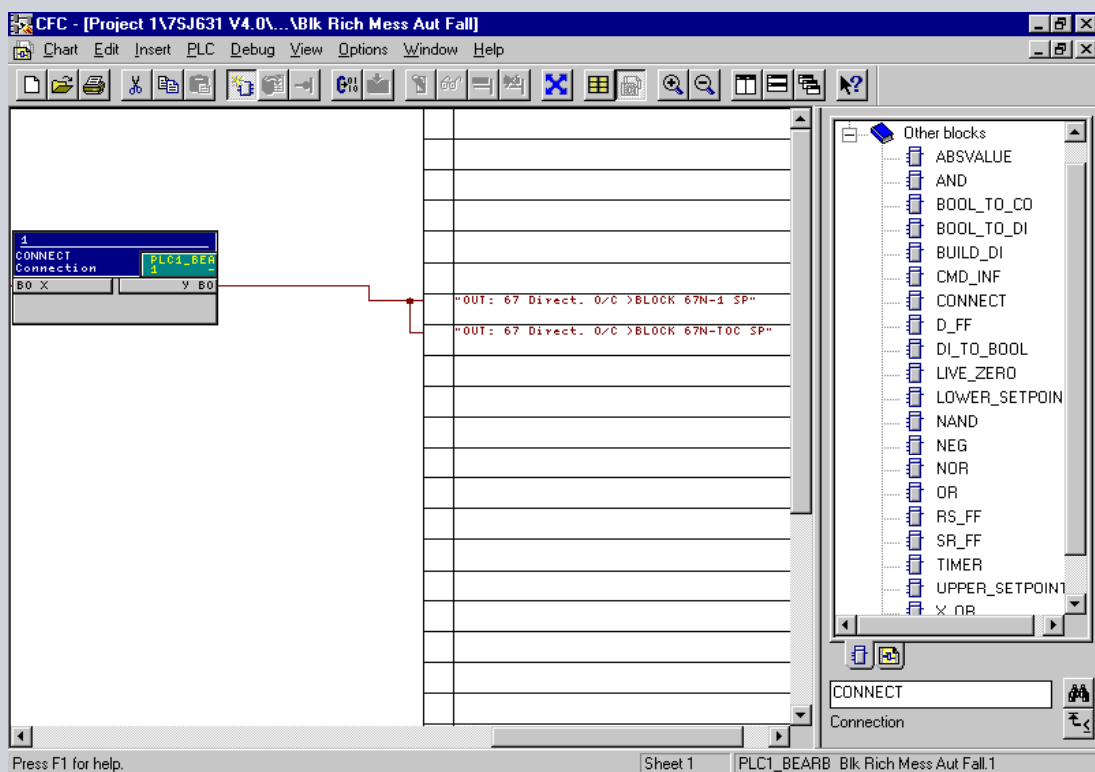
# DIGSI 4 – Configuration of CFC Functions



Energy Automation

© Siemens AG 2008  
Energy Sector

# DIGSI 4 – Configuration of CFC Functions



Energy Automation

© Siemens AG 2008  
Energy Sector

- Loading of the settings
- Change of individual settings
- Indications, measured values, retrieval of fault records
- Device control
  
- Execute test functions
- Device reset and resume
- Setting of clock and date

### User interface

- DIGSI 4 direct connection

### Service interface

- DIGSI 4 modem connection

### System interface (PROFIBUS)

- connection to control center

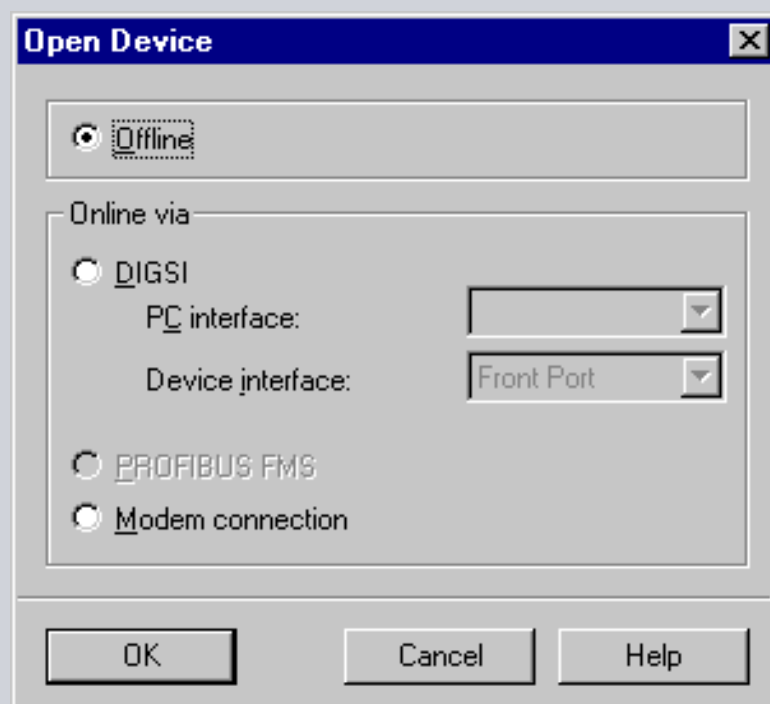
## DIGSI 4 – Device Initialization

The online mode



## DIGSI 4 – Setting up of Device Connection

Open device  
Parameterize connection



# DIGSI 4 – Saving Settings

SIEMENS

